

KISII UNIVERSITY
UNIVERSITY EXAMINATIONS

SUPPLEMENTARY/SPECIAL EXAMINATIONS
SECOND YEAR EXAMINATION FOR THE AWARD OF THE DEGREE
BACHELOR OF MEDICINE AND BACHELOR OF SURGERY (MBCHB)
END OF YEAR SUPPLEMENTARY/SPECIAL EXAMINATION
[2021/2022 ACADEMIC YEAR]

MEDS 222: MEDICAL MICROBIOLOGY I

STREAM: Y2 S2

TIME: 2 HOURS

DAY: TUESDAY, 9:00 – 12: 00 P.M.

DATE: 28/04/2022

INSTRUCTIONS

- 1. Do not write anything on this question paper.**
- 2. Attempt ALL questions.**

QUESTION ONE

You are provided with Specimen T of the fungi and a stained Specimen W obtained from Specimen T for microscopy.

- i. With the aid of the hand lens draw and label the observation made on Specimen T. (3marks)
- ii. Describe the morphological characteristics of Specimen T fungi growth as seen on the growth media provided. (2marks)
- iii. In case Specimen T is deprived of the nutrients and water what will be the most probable outcome of its growth on the cultured medium? (1mark).
- iv. Under microscopic examination draw and label Specimen W. (2marks)
- v. Highlight the key observational features as seen in the stained Specimen W. (2marks)

QUESTION TWO

You are provided with slides containing Specimen X1 & X2. Use them to answer the following questions:

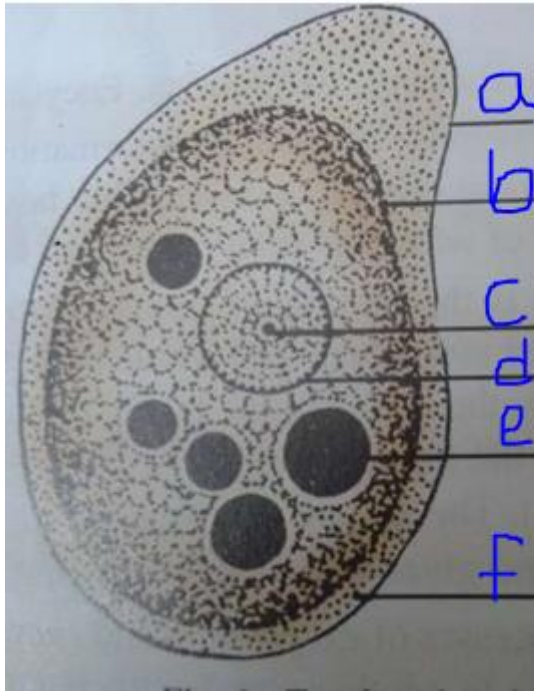
- a) Examine and identify the stages of the parasites present. (2marks)
- b) Draw and label all the parts. (4marks)
- c) State the functions of each labelled part. (3marks)
- d) Justify the organelles you observe that characterize the respective parasites. (1mark)

QUESTION THREE

- a) You are provided with Specimen E, examine it, draw and label its major parts. (4marks)
- b) Give a detailed account on how specimen E is adapted to its parasitic mode of life. (6marks)

QUESTION FOUR

Use the following diagram to answer the following questions that follow.



- a) Identify the developmental stage shown in this diagram. (1 mark)
- b) Name the parts labelled a-f. (5marks)
- c) Briefly describe its pathogenesis. (4marks)